



Copyright FD



FCI

FCIconnect.com

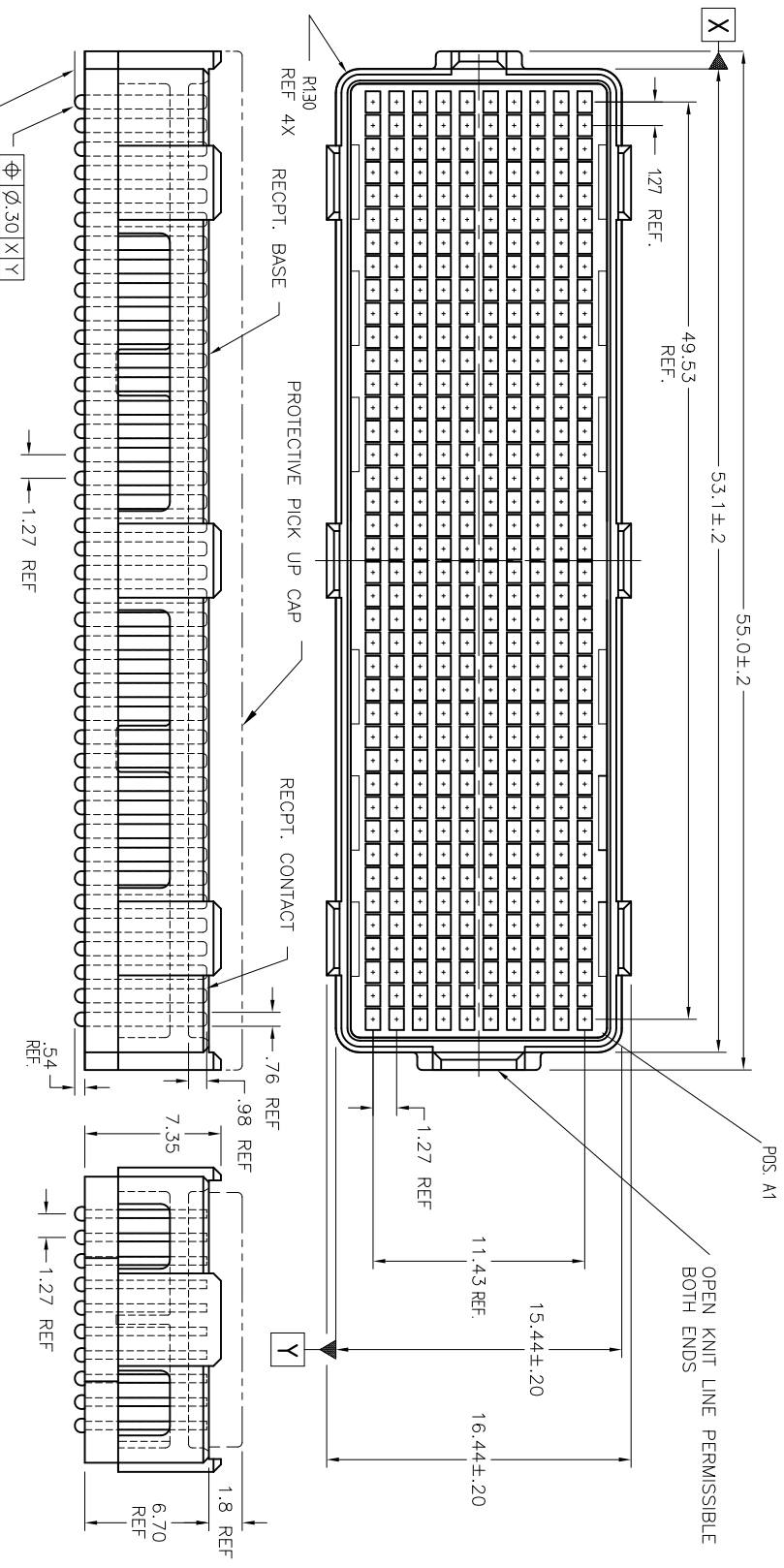


PRODUCT NUMBER
SEE SHEET 3

1 | 2

3 |

4



0.30 X Y

.203

B

A

Form: A4mmX1c

1 |

2 |

3 |

4

mat'l. code		SEE NOTE 1		surface	tolerance	projection	product family	
ltr	ecm no.	dfr	date	ASME Y14.5	ASME Y14.5	ASME Y14.5	MEG-ARRAY	title
L	V06-0560	LP	2006-06-29	angles	XXX.X3	MM	8mm RECPT. ASSY	10 X 40 = 400 POS.
M	V09-0499	RE	2009-10-21	holes	XXX.X3	MM	8mm RECPT. ASSY	10 X 40 = 400 POS.
N	V-0123332	RE	2002-08-08	or ±.2"	XXX.X051	Scale: 3:1	8mm RECPT. ASSY	10 X 40 = 400 POS.
P	V-B977-1	DCH	2002-11-06	dfr	D WAUSCHEN	1998-01-05	8mm RECPT. ASSY	10 X 40 = 400 POS.
R	V-B9499	DCH	2005-11-20	BDQJ	T LEMKE	1998-01-05	8mm RECPT. ASSY	10 X 40 = 400 POS.
-	-	-	-	dfr	T LEMKE	1998-01-05	8mm RECPT. ASSY	10 X 40 = 400 POS.
K	V04-0940	VS	2004-10-18	3DDJ	T LEMKE	1998-01-05	8mm RECPT. ASSY	10 X 40 = 400 POS.
Sheet	revision	R	R	R	R	R	R	R
Index	Sheet	1	2	3				



FCI
CUSTOMER Drawing
A4

B

A



Copyright FCI



FCI
FCIconnect.com



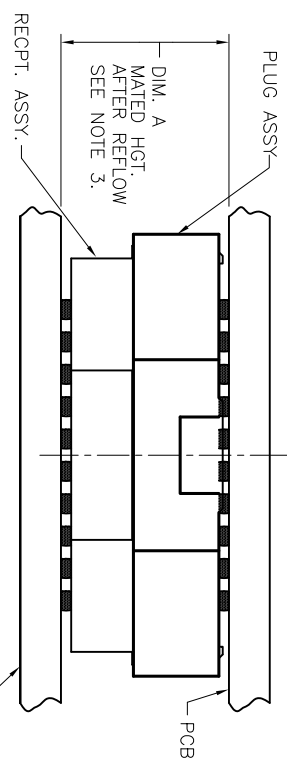
3 |



4

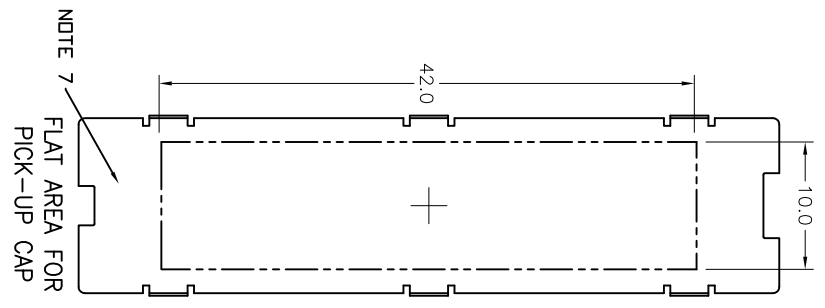
1 | 2

STENCIL MATED CONNECTOR OUTLINE
ONTO BOARD.

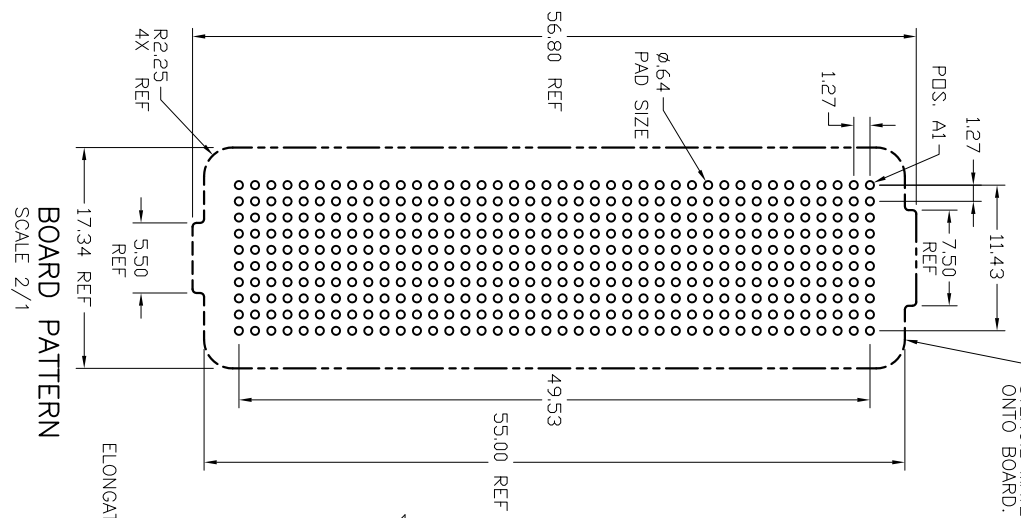


DIM. A	PLUG ASSY P/N	RECEPT. ASSY P/N
8.0	84740	74390
14.0	84520	74390

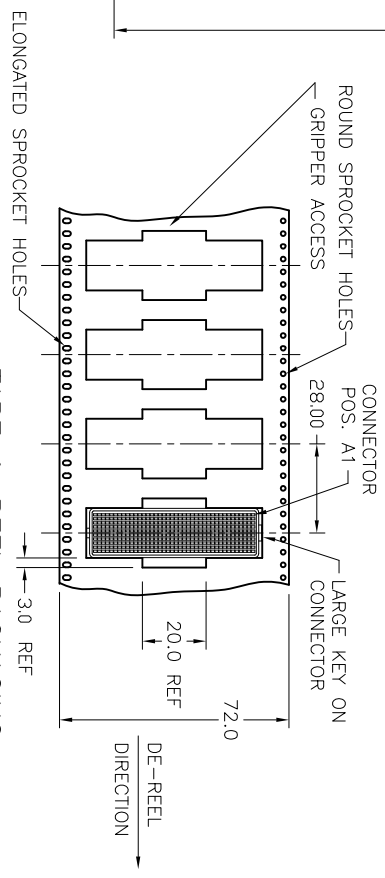
MATED HEIGHT AFTER REFLOW IS BASED ON ϕ .64mm PAD (METAL-DEFINED) AND .13mm SOLDER PASTE STENCIL THICKNESS. SEE NOTE 3.
END VIEW - MATED CONNECTORS SCALE NONE



NOTE 7
FLAT AREA FOR PICK-UP CAP



BOARD PATTERN
SCALE 2/1



TAPE & REEL PACKAGING SCALE NONE
PER EIA 481-3

mat'l. code	SEE NOTE 1	surface	tolerance	projection	product family
lfr	ecm no.	dr	date	ASME Y14.5	MEG-ARRAY
		ASME Y14.5 <td>ASME Y14.5 <td></td> <td></td> </td>	ASME Y14.5 <td></td> <td></td>		
		angles	X&E3	MM	
		dr	XXX.13	Scale: 2:1	
		dr	XXX.051		
		dr	D WAUGHEN 999-01-05		
		dr	T LEMKE 999-01-05		
		dr	T LEMKE 999-01-05		
		dr	T LEMKE 999-01-05		
		dr	T LEMKE 999-01-05		
		dr	T LEMKE 999-01-05		
Sheet	revision				
Index	Sheet				

FCI

dwg no
74390

sheet 2 of 3 size
A4

CUSTOMER Drawing

form: ADMX11C

1

2

3

4

A

A

B

B

NOTES:

1. MAT'L:

HOUSING: LCP
CONTACT: COPPER ALLOY

PLATING

CONTACT: (SEE TABLE ON SHEET 3)
SOLDER BALL: (SEE TABLE ON SHEET 3)
EUTECTIC SnPb OR LEAD FREE
95.5Sn/44g/0.5Cu

2. SOLDER BALLS WILL NOT BE PERFECT SPHERICAL SHAPE DUE TO REFLOW ATTACHMENT.

3. MATED HEIGHT EFFECTED BY CUSTOMER'S PCB PAD SIZE, PLATING, SOLDER REFLOW PROFILE, & SOLDER PASTE.

4. PLATING FOR INDICATED -2XX SERIES PRODUCT NUMBERS MEET THE REQUIREMENTS OF GR-1217-CORE, CENTRAL OFFICE ENVIRONMENT, (25 YEAR LIFE EXPECTANCY). THE CONTACT GEOMETRY IN THESE PRODUCT NUMBERS IS SPECIAL ALSO.

5. FOR PROPER APPLICATION FOLLOW FCI APPLICATION SPECIFICATION GS-20-033 LEAD FREE SOLDER BALLS WILL NOT SOLDER PROPERLY IN A LEADED SOLDER PROCESS DUE TO A HIGHER REFLOW TEMPERATURE. LEAD FREE PRODUCT IS THEREFORE NOT BACKWARDS COMPATIBLE WITH LEADED OR SOME SOLDERING APPLICATIONS. REFERENCE FCI APPLICATION SPECIFICATION

6. THIS PRODUCT MEETS EUROPEAN UNION DIRECTIVES AND OTHER COUNTRY REGULATIONS AS DESCRIBED IN GS-47-0004 PRODUCT MEETING THIS DIRECTIVE IS IDENTIFIED IN THE LOT CODE NUMBER MARKED ON EACH PART BY HAVING AN "X" IN THE SEVENTH CHARACTER POSITION

7. COMPANY LOGO TO APPEAR IN THIS AREA.

8. 74390-302, -302LF, -402, -402LF, -502 AND -502LF ARE OBSOLETE

PRODUCT NUMBER	PICK-UP CAP (NATURAL OR BLACK COLOR)	CONTACT PLATING AND THICKNESS	SOLDER BALL	NOTES
74390-001	YES	15u" (.38um) Au	SnPb	
74390-001LF	YES	15u" (.38um) Au	LEAD FREE SnPb	6
74390-091	YES	15u" (.38um) EXT	SnPb	
74390-091LF	YES	15u" (.38um) EXT	LEAD FREE SnPb	6
74390-101	YES	30u" (.76um) Au	SnPb	
74390-101LF	YES	30u" (.76um) Au	LEAD FREE SnPb	6
74390-191	YES	30u" (.76um) EXT	SnPb	
74390-191LF	YES	30u" (.76um) EXT	LEAD FREE SnPb	6
74390-201	YES	50u" (1.27um) Au SPECIAL	SnPb	4
74390-201LF	YES	50u" (1.27um) Au SPECIAL	LEAD FREE SnPb	4 AND 6
74390-291	YES	50u" (1.27um) EXT SPECIAL	SnPb	4
74390-291LF	YES	50u" (1.27um) EXT SPECIAL	LEAD FREE SnPb	4 AND 6
74390-301	YES	15u" (.38um) Au SPECIAL	SnPb	8
74390-301LF	YES	15u" (.38um) Au SPECIAL	LEAD FREE SnPb	6 AND 8
74390-401	YES	30u" (.76um) Au SPECIAL	SnPb	8
74390-401LF	YES	30u" (.76um) Au SPECIAL	LEAD FREE SnPb	6 AND 8
74390-501	YES	Au SPECIAL	SnPb	4 AND 8
74390-501LF	YES	Au SPECIAL	LEAD FREE SnPb	4, 6 AND 8

10. A  SYMBOL WILL BE NEXT TO ANY DIMENSION, NEW VIEW OR NOTE WHICH HAS BEEN MODIFIED WITH THE CURRENT DRAWING REVISION

mat'l code	revision	date	surface	tolerance	projection	product family	title
SEE NOTE 1	1		ASME Y14.5	ASME Y14.5		MEG-ARRAY	8mm RECEPT. ASSY. 10x40 = 400 POS.
lfr	ecm no	dfr	angles	XXXX.XX	MM		
R			0° ±.2°	XXXX.XX	Scale: 2:1		
sheet index	revision						